



DashDrive HV610 USB 3.0 External Hard Drive

Product Review Guide

August 2012

Contents



Introduction	1
Product Highlights	2
Specifications	2
Points of Interests	3
Remarks	4
Contact Information	4

Introduction

This performance guide contains information on the new DashDrive™ HV610 USB 3.0 external hard drive, including product features and descriptions, and benchmark results.

Product images can be downloaded from

http://www.adata-group.com/index.php?action=bs_main&page=bs_content_product_pictures_detail&ProductID=191&flag=
http://www.adata-group.com/index.php?action=bs_main&page=bs_content_product_packages&ProductID=191&flag=

Please refer to this guide prior to and during testing, and feel free to use this content when composing review articles.

If you encounter any problems during the testing process, or if you have questions regarding the test results, please contact us via email using the contact information found at the end of the guide.

Product Highlights

The DashDrive HV610 portable hard drive offers a new design featuring a smart cover that provides cable management function. It combines a unique puzzle style with a SuperSpeed USB 3.0 interface, targeting the young generation whose active lifestyles call for interesting and eye-catching product design.

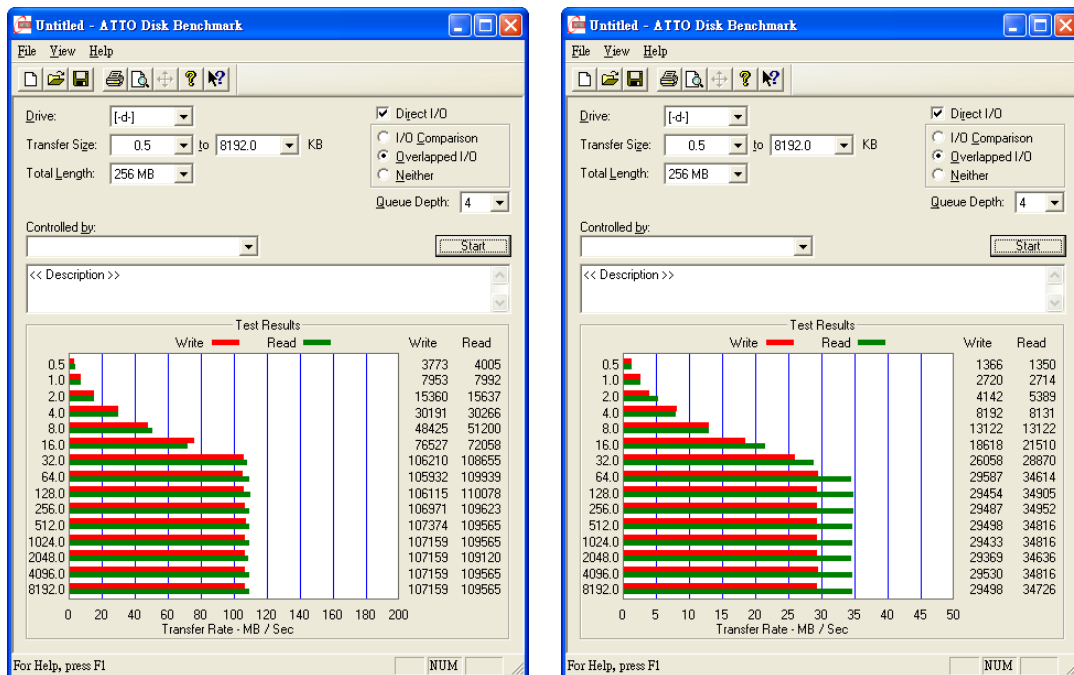
- Stylish product design
 - The exterior of the HV610 body comes in choice of two attractive monochrome patterns, each with interlocking glossy and matte puzzle piece lines.
- Removable smart cover
 - A matching USB cable stored in the cool ice-blue smart cover, demonstrating the most eye-catching street fashion style.
- Bright cold-blue LED indicator
 - The HV610 features a bright cold-blue LED indicator that shines through the enclosure to indicate power and data transfer status.
- SuperSpeed USB 3.0 interface
 - Equipped with a 2.5-inch 5,400 RPM hard drive and USB 3.0 transfer interface. Compared to USB 2.0 in file reads, writes, or data backups, performance of the ultra-high-speed USB 3.0 interface is improved by nearly three times, substantially reducing the required transmission time by as much as 70%.

Specifications

1. Device Interface: USB 3.0 (backward compatible with USB 2.0)
2. HDD Interface: 2.5" SATA II
3. Available colors: black / white
4. Capacity: black – 500GB / 750GB / 1TB
white – 500GB / 1TB
5. Accessory: blue smart cover for cable management
6. Bright cold-blue LED to show transferring status
7. Dimensions: 115 x 90 x 18mm (4.5 x 3.5 x 0.71in)
8. Weight: 165g (0.36 lb)

Points of Interests

1. The HV610 has a sliding outer shell that holds the USB cable when not in use and is a stylish and practical solution to cable management. The HV610 external hard drive offers a choice of cool black and twinkling white colors, and comes in capacities of 500GB, 750GB and 1TB for black and 500GB and 1TB for white, giving consumers a chance to show their personality and freedom of choice.
2. In terms of real world data transfer performance, a 7.98GB file is transferred between the HV610 to a laptop computer via USB 3.0 interface to the read/write speed. Based on the results of ATTO Disk Benchmark, the write speed can reach 107 MB/s, while the read speed can reach 109 MB/s.



** Test software: ATTO

** Test product: ADATA HV610 750GB

** Test platform: MB→X58A-UD3R

CPU→Core i7-920

RAM→DDR3-1333 2GBx3

** Note: test results will vary according to hard drive and test platform.

3. Comparing to USB 2.0, in which speeds max out at around 34MB/s on the same platform, the HV610 is able to perform three times better than conventional portable hard drives with a USB 2.0 interface.

Remarks

The DashDrive HV610 external hard drive combines a unique picture puzzle design concept with a SuperSpeed USB 3.0 interface. A removable smart cover provides a convenient and novel way to store the transmission cable.

Contact Information

If you have additional questions that are not answered by this guide, or if you experience technical difficulties with your ADATA product, please contact:

Jessica Yin

ADATA Technology Co., Ltd.

Marketing Department

Tel: +886-2-82280886 ext. 12989

Fax: +886-2-82271760

E-mail: jessica_yin@adata.com.tw