



**DashDrive Elite HE720 USB 3.0 External Hard Drive**

**Product Review Guide**

September 2012

# Contents



Introduction	1
Product Highlights	2
Specifications	2
Points of Interests	4
Remarks	5
Contact Information	5

## Introduction

This performance guide contains information on the new DashDrive™ Elite HE720 USB 3.0 external hard drive, including product features and descriptions, and benchmark results.

Product images can be downloaded from

[http://www.adata-group.com/index.php?action=bs\\_main&page=bs\\_content\\_product\\_pictures\\_detail&ProductID=195&flag=](http://www.adata-group.com/index.php?action=bs_main&page=bs_content_product_pictures_detail&ProductID=195&flag=)

Please refer to this guide prior to and during testing, and feel free to use this content when composing review articles.

If you encounter any problems during the testing process, or if you have questions regarding the test results, please contact us via email using the contact information found at the end of the guide.

## Product Highlights

The DashDrive Elite HE720 external hard drive sports a brushed stainless steel surface with a SuperSpeed USB 3.0 interface, and with a record-breaking slim profile of only 8.9mm thickness, demonstrating ADATA's consistently strong ability to combine top performance with style. This product targets the generation whose active lifestyles call for elegant and high-end product design.

- The slimmest external hard drive in the world
  - The HE720 sports a record-breaking slim profile of only 8.9mm thickness, combining top performance with sleek style.
- Elegant texture with hairline finish
  - The brushed stainless steel case with protective layer provides 9H scratch resistance, which prevents damage and marring even after long-term use.
- One-touch backup
  - With one easy touch, all data can be automatically backed up and synchronized.
- Bright blue LED indicator
  - The HE720 features a bright blue LED indicator that shines through the enclosure to indicate power and data transfer status.
- SuperSpeed USB 3.0 performance
  - The HE720 is equipped with a SuperSpeed USB 3.0 transfer interface, nearly three times faster than USB 2.0.
- 500GB capacity
  - Delivers a robust capacity of 500 gigabytes in a remarkably compact 8.9mm thickness.

## Specifications

1. Device Interface: USB 3.0 (backward compatible with USB 2.0)
2. HDD Interface: 2.5" SATA II
3. Capacity: 500GB
4. Bright blue LED to show transfer status
5. Dimensions: 117 x 79 x 8.9mm (4.6 x 3.1 x 0.4in)

6. Weight: 164g (0.41lb)

7. System Compatibility: Windows XP, Windows Vista, Windows 7

Mac OS X 10.6 or later

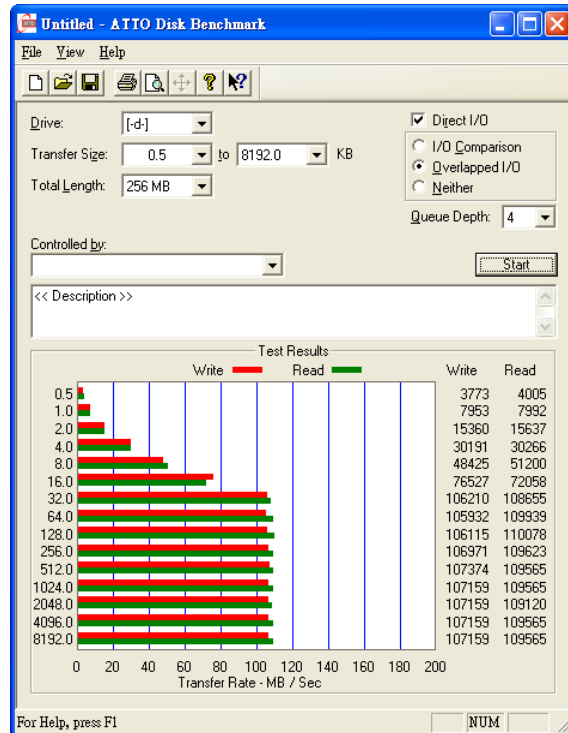
Linux Kernel 2.6 or later

8. Warranty: 3 years

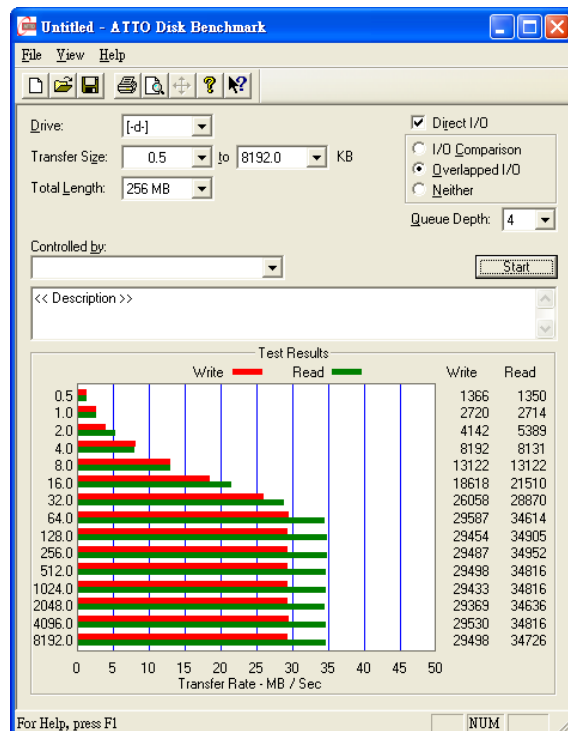
9. Temperature: Operating 5°C~50°C; Storage -40°C~60°C

# Points of Interests

1. The HE720 external hard drive is a strong addition to ADATA's top tier external storage products. It is one of the most advanced products in terms of performance and design, and offers an elegant brushed stainless steel case. It comes in capacity of 500GB, and features ADATA's popular "one touch backup" feature, which automatically backs up and synchronizes data with one easy touch.



2. In terms of real world data transfer performance, a 7.98GB file is transferred between the HE720 to a desktop computer via USB 3.0 interface to the read/write speed. Based on the results of ATTO Disk Benchmark, the write speed can reach 107 MB/s, while the read speed can reach 109 MB/s.



3. Comparing to USB 2.0, in which speeds max out at around 34MB/s on the same platform, the HE720 is able to perform three times better than conventional portable hard drives with a USB 2.0 interface.

\*\* Test software: ATTO

\*\* Test product: ADATA HE720

\*\* Test platform: MB→X58A-UD3R

CPU→Core i7-920

RAM→DDR3-1333 2GBx3

\*\* Note: Test results will vary according to hard drive and test platform.

## Remarks

The DashDrive Elite HE720 external hard drive is a USB 3.0 compatible device that is the world's thinnest of its kind. It features a brushed stainless steel surface, a bright blue LED indicator to indicate power and data transfer status, and the very practical "One touch backup" function, which automatically backs up and synchronizes data with one easy touch.

## Contact Information

If you have additional questions that are not answered by this guide, or if you experience technical difficulties with your ADATA product, please contact:

Jessica Yin

ADATA Technology Co., Ltd.

Marketing Department

Tel: +886-2-82280886 ext. 12989

Fax: +886-2-82271760

E-mail: [jessica\\_yin@adata.com.tw](mailto:jessica_yin@adata.com.tw)