



GT200

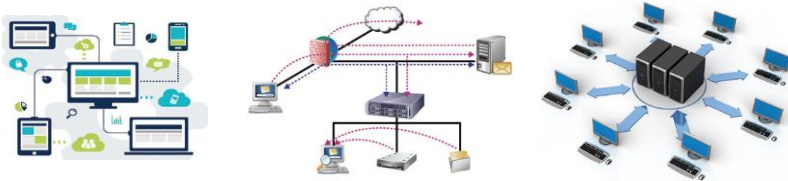
Micro Server for SME

Storage & Share | Any Time Any Where

As SME server expert, GT200 are widely utilized in SME and group that starting a business. Keeping updated work & life status, convenient file sharing and communication will bring higher efficiency to the work and better experience to life.

Application scenes

Small Data Center for SME, File server, Web server, Email server, Printer server.



➤Intel® High-speed Dual-core Processor

Adopting high-performance Intel®1037U dual-core processor, with the dominant frequency up to 1.8G and lowest power consumption to 17W, meeting the demand of high-speed computing while decreasing the total power consumption to the greatest extend, to enhance the stability while the machine is running.

➤Ultra-high Scalability

Applying 2* SO-DIMM slots and supporting DDR3 1333/1600MHz, max memory is up to16G; Built-in Intel® 210AT and 82579LM dual gigabit Ethernet for networking with bandwidth approximate up to gigabyte; One built-in m-SATA SSD port, supporting SATA 3.0 type with the max reading speed up to 6Gb/s, to build the outstanding embedded server products.

➤Multi-function for Enterprise’ s Demand

Supporting the sharing, encryption and backup of files, it can be utilized as private cloud date center, printing server, web server,email server, surveillance server, Multi-media server and ERP server. It can provide 7x24-hour stable service after strict testing to cover enterprises’ various demands.

Specifications	GT200
CPU	Intel® Celeron® Processor 1037U
Chipset	Intel® HM77
Phy	Intel® 82579LM Gigabit Ethernet PHY
Memory	2*SO-DIMM, Supports DDR3 1333/1600MHz, up to 16GB NOTE: The system is shipped without memory.
Internal hard drive	1*M-SATA (NOTE: The system is shipped without SSD.)
Hard Drive	2.5/ 3.5" SATA x2 (NOTE: The system is shipped without HDD.)
hard drive bay	2 x Hot-swappable tray
LAN	2 x Gigabit RJ-45 Ethernet port
LED Indicator	Power, LAN, HDD 1, HDD 2, Status
USB	1 x USB 3.0(Front), 2 x USB 2.0 port (Back), 1 x USB 2.0 port (Onboard) Support USB printer, pen drive, USB hub, and USB UPS etc.
Audio	1*Audio Out
Video Output	1 xVGA
Button/Switch	System: Power button, Reset button, Clear CMOS button, JAHC Switch
Buzzer	System warning
Chassis Type	Tower
FAN	1 x quiet cooling fan (75*75*15mm), DC 5V
Power	12V 5A 60W AC Adapter
OS Supported	Red Hat Enterprise Linux 7.0 Ubuntu server 14.04 Windows Server 2008 R2 Windows Server 2012 Windows Server 2012 R2
Operating Temperature	0~40°C
Relative Humidity	0~95% R.H.
Size	214.5*110*170mm