

# **Rextorm PX501 Product Selling Features**

2018/01/11 V.18A



Always on rugged

**01**

**Introduction**

**02**

**Products**

**03**

**Tailored Accessories**

**04**

**Applications & Scenarios**





RuggON Rextorm tailored for critical and tough missions. The series is designed for advanced data collection and harsh environment to meet various demands :

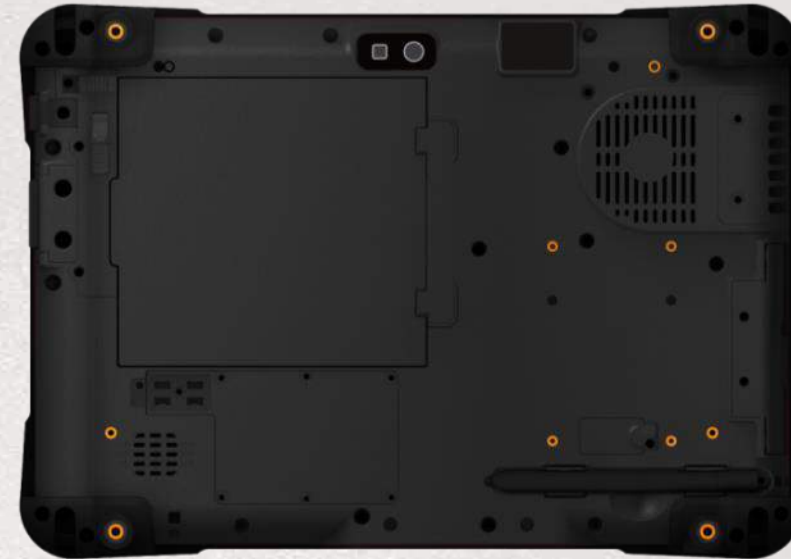
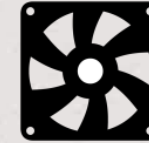
- ◆ **Platform choices** : 7th generation Intel Core™ i5
- ◆ **Ease of use** : full range of connectivity options.
- ◆ **Advanced display** : 1000 nits sunlight readable, dim-to-black display with water rejection touch & optional digitizer.
- ◆ **Data collection** : 2D barcode and NFC; ID/Passport reading via Smart card and OCR options (for law enforcement)
- ◆ **Long battery life** : up to 23 hours with extended battery



**Products**

# Outlook

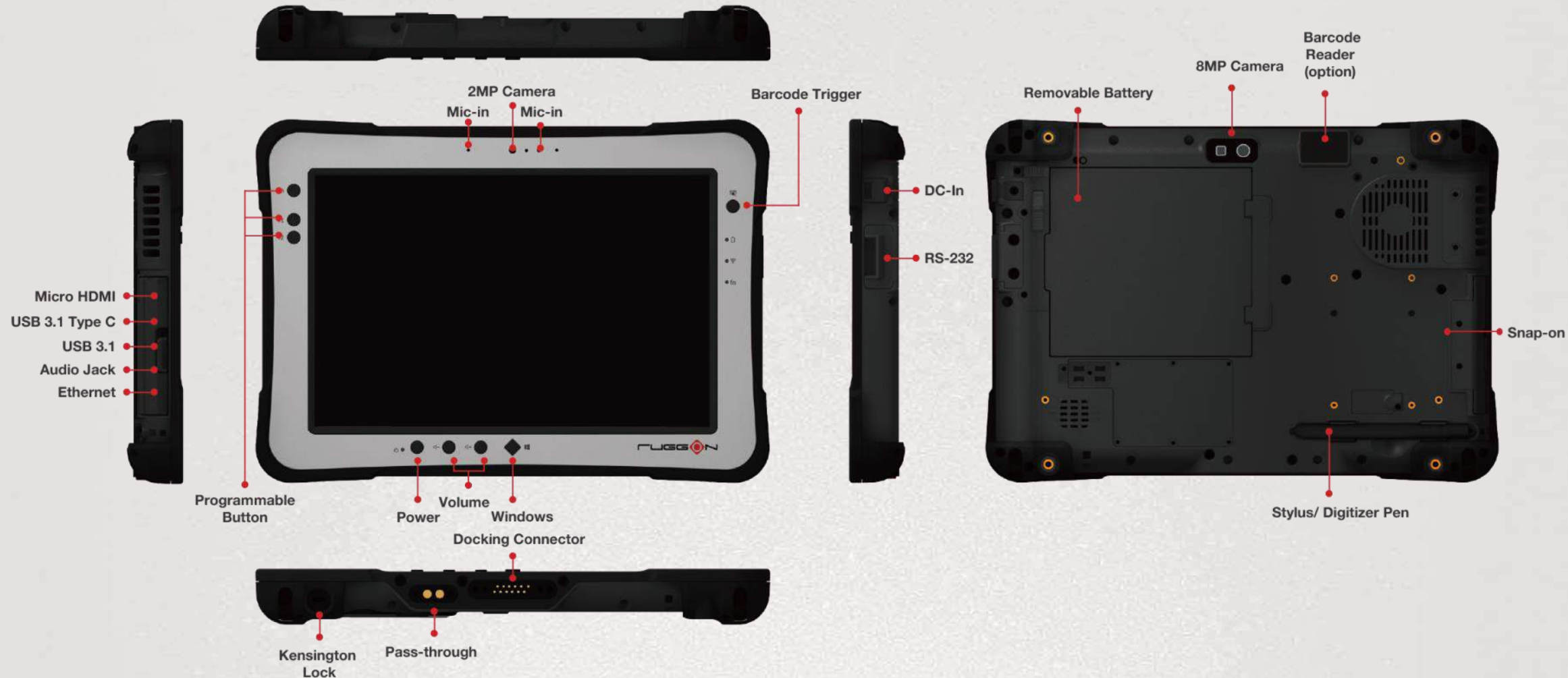
Always on rugged





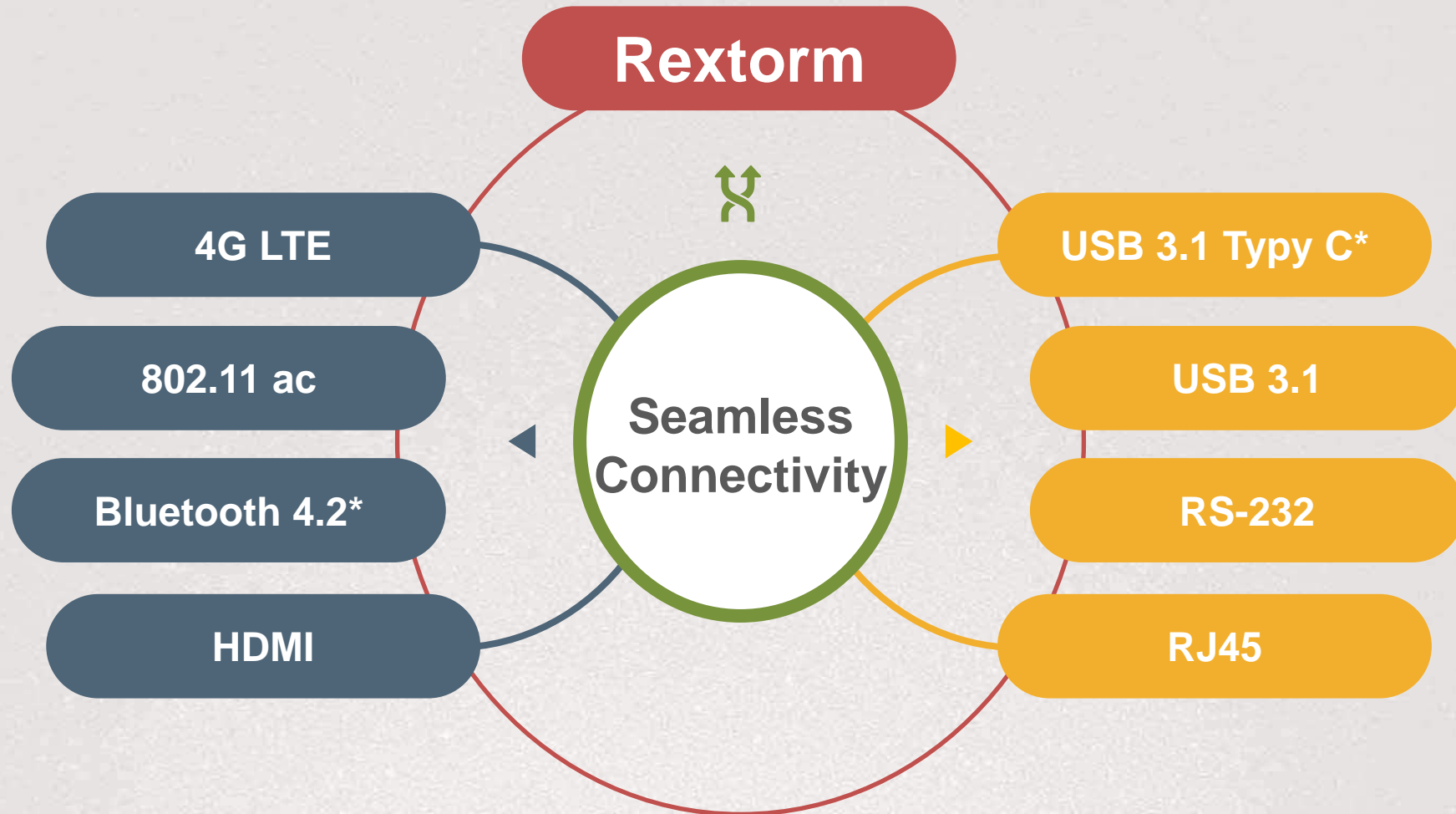
# Outlook : PX501

Always on rugged



# Seamless Connectivity

Always on rugged



# Long Battery Life for Work Shift

## ◆ Hot swappable battery design for field application

- A hot swappable battery design can be switched in and out without ever turning off the device.
- 5 min. count down with voice alarm in last minute.



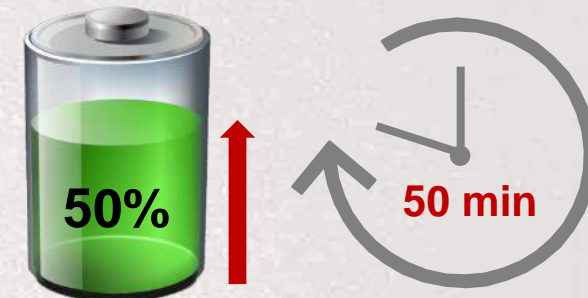
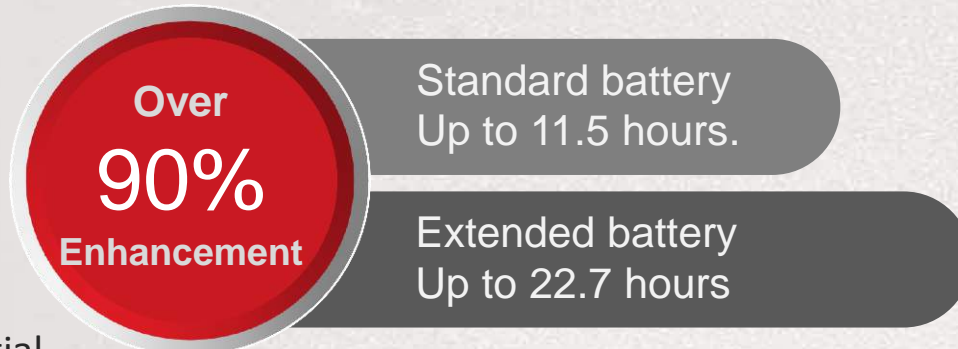
Windows



Android



## ◆ With Long battery life and fast charging design, you can do more.





# Various Data Capture

Always on rugged



8MP/ 5MP rear camera with LED flash

Built-in 2D Barcode Reader (option)

- Optional OCR reading feature for

Integrated NFC

\* PX-501 series : via snap-on module

Snap-on connector for expansion flexibility

- NFC + Smart Card reader
- Easy for customization

# Advanced Capacitive Touch & Digitizer

Always on rugged

10-point Multi-touch

Water Rejection

2mm Hard Tip Stylus,  
Optional IP54 Digitizer Pen



Palm Rejection



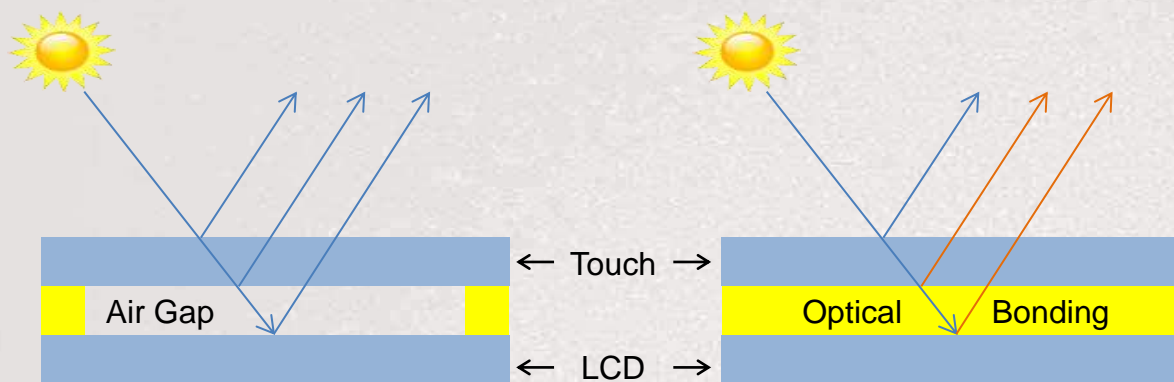
Glove-touch

# Brilliant Display Performance

Always on rugged

## ◆ Sunlight readable

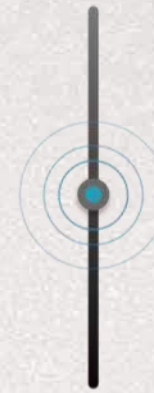
- 1000 nits (before touch)
- Optical bonding
  - Reduce sunlight reflection
  - Increase LCD backlight transmission



## ◆ Optional Dim-to-Black feature

- One button to lower the brightness to 0.2 nits

1000 nits



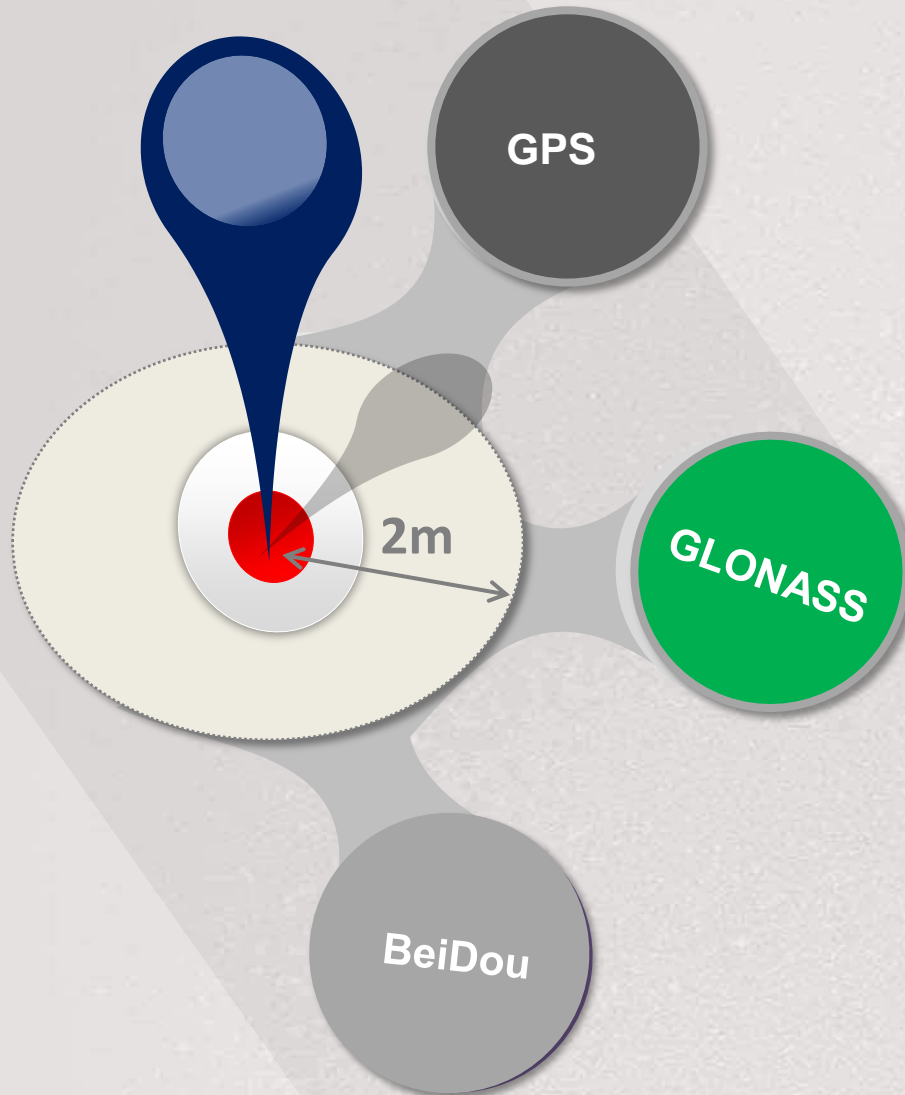
0.2 nits





# Wide Coverage GNSS

Always on rugged



- ◆ Dedicated GNSS module and internal antenna
- ◆ Support GPS, GLONASS and BeiDou satellite systems
- ◆ Continuous accuracy level in underpass, tunnel, and between buildings
- ◆ Shorter acquisition time
- ◆ Accuracy level up to 2m (SBAS enabled)

# Uncompromising Ruggedness

Always on rugged

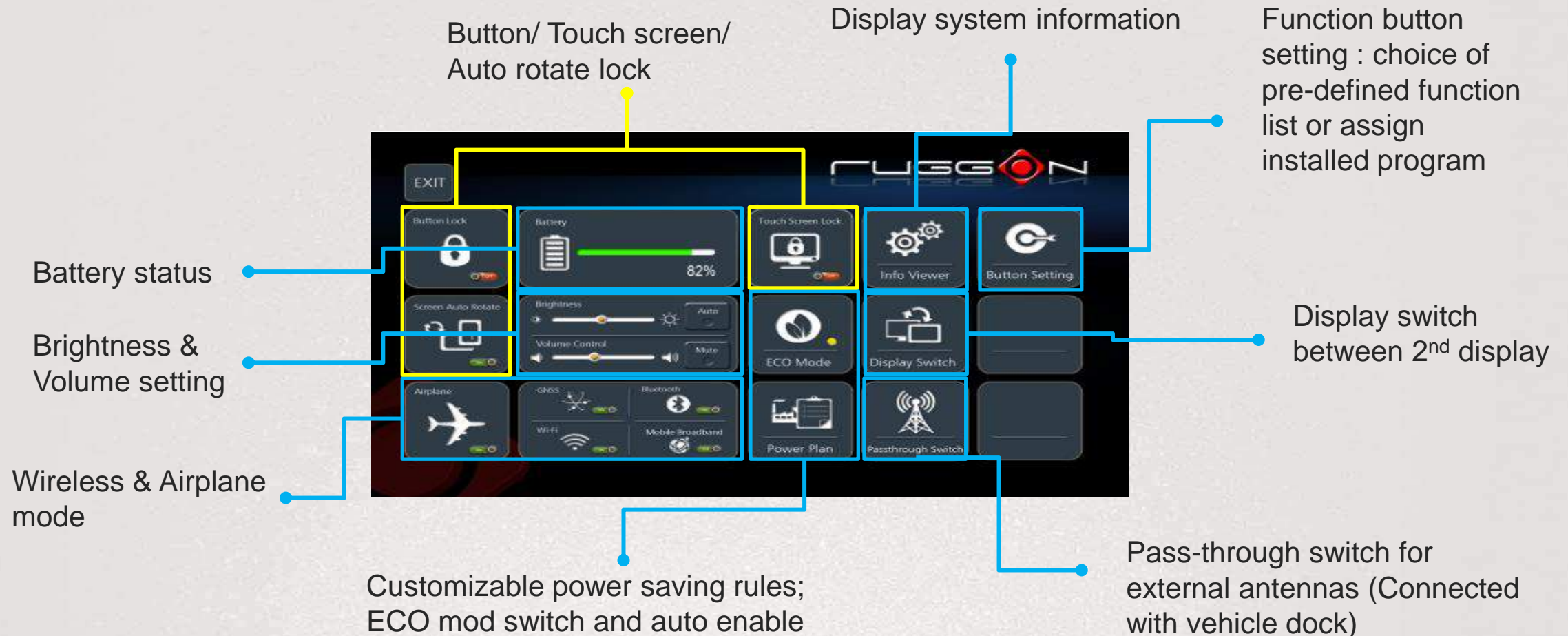
- ◆ IP65
- ◆ Drop Resistant
  - 5 feet, 26 drops with one device
- ◆ Wide Temperature
  - Operating : -20°C to 60°C
  - Storage : -30°C to 70°C
- ◆ Shock
  - MIL-STD-810G Method 516.6 Procedure 1
    - Sawtooth wave / Min. peak value : 40g / 11ms duration
- ◆ Vibration
  - MIL-STD-810G Method 514.6 Category 4
    - Fig 514.6C-1 Common carrier (US highway truck)
    - Fig 514.6C-3 Composite wheeled vehicle



**MIL-STD-810G**

# User Friendly Design: DashON

## ◆ Quick Setup Interface







# **Tailored Accessories**

# Vehicle Dock

Always on rugged



- ◆ IP54
- ◆ Vibration resistant – C1
- ◆ Shock resistant – 75G
- ◆ Power: 9 to 32VDC input, 19VDC 1.57A output
- ◆ 75mm/100mm VESA bracket screw holes

SKU	VD06-S	VD06-F
USB 3.1 Gen I	x 2	x 2
USB 2.0	N/A	x 2
RS-232	N/A	x 2
RJ45	N/A	x 1
HDMI	N/A	x 1
VGA	N/A	x 1
Audio jack	N/A	x 1
Speaker	N/A	x 1
SMA antenna connector	x 2	x 2
DI/DO	N/A	4xDI; 4xDO
DC-in	x 1	x 1

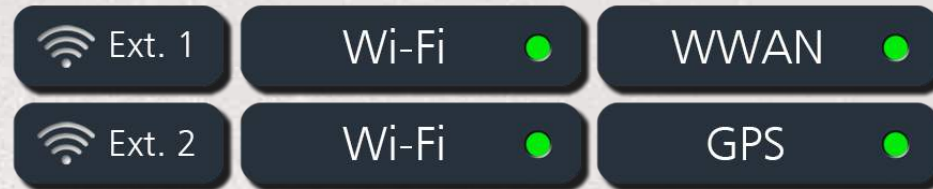
# Vehicle Dock – Added Features

- ◆ Lock with pairing key
- ◆ D-ring design for adding 2nd lock



- ◆ Flexible antenna pass-through setting

- Choose either 2 of the following function through DashON



- ◆ Fuse for over current protection
- ◆ Easy swap fuse design





# Desktop Dock

Always on rugged



SKU	DT06-F
Kensington Lock	x 1
USB 3.1 Gen I	x 2
USB 2.0	x 2
RJ45	x 1
HDMI	x 1
VGA	x 1
DC-in	x 1

- ◆ Multiple interfaces
- ◆ Share the same power adapter with tablet

# Battery Charger

Always on rugged



- ◆ Dual bay design
  - Each bay can support both standard and extended battery
- ◆ Clear LED indicators
  - Power
  - Charging status of each bay
- ◆ Share the same power adapter with tablet

# NFC + Smart Card Reader SnapON



## NFC

- ◆ Frequency : 13.56MHz
- ◆ Tag type :
  - ISO/IEC 14443A, 14443B, 15693
  - MIFARE 1K/4K, Ultralight
  - NFC-IP2 protocol

## Smart Card Reader

- ◆ ISO7816 compliant
- ◆ EMV2000 (EMV 4.1) compatible
- ◆ Support PC/SC1.0 & PC/SC2.0
- ◆ Cards :
  - Atmel : AT88sc1608, AT88sc153
  - Atmel : AT24c128, AT24c256
  - ST : M14C16, M14C04
  - Siemens 2-wire link protocol : sle4432/42
  - Siemens serial 3-wire bus : sle4418/28



# Expansion Flexibility : SnapON

Always on rugged



SnapON Area

To fulfill various needs & applications in field service, Rextorm SnapON is designed for great flexibility.

The expansion of NFC and Smart Card reader is ready and the SnapON concept makes expansion customization easy and efficient.

# Other Optional Accessories

Always on rugged



VESA Mount Bracket



Hand Strap



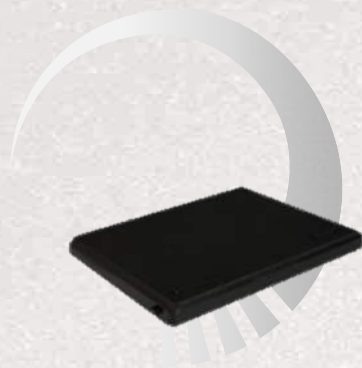
Shoulder Strap



Handle



NFC + Smart Card Reader



4500mAh Battery



9000mAh Battery



Battery Charger



Car Adapter



# **Applications & Scenarios**





## Reading Blueprint at Field

Rextorm offers the best viewing experience and user-friendly control interfaces.

- ◆ High resolution display for attention to detail.
- ◆ Ultra brightness for sunlight readability.
- ◆ Advanced touch technology with glove touch support.
- ◆ Built-in WiFi / WWAN enables accessing back-end database & scheduling.
- ◆ Long battery life for work hour shifts.

## Work Dispatch & Inspection



Rextorm enables control center to optimize work force management and minimize human errors.

- ◆ 4G LTE support ensure real time connectivity between control center and field workers.
- ◆ Dedicate GNSS for precise tracking.
- ◆ NFC can read RFID tag at each check point to prove arrival.
- ◆ Task surveillance with 8M/ 5M camera.
- ◆ Versatile I/O to connect with professional instruments for data capture and inspection.





## Mobility Increases Efficiency

Rextorm allows rapid deployment and fast data verification for the law enforcers.

- ◆ Built-in WiFi / WWAN enables database connection during inspection.
- ◆ GNSS enables police vehicle tracking.
- ◆ Vehicle dock allows easy work accessibility in and off police car.
- ◆ Value added module integration for law enforcement such as personal and document identification.





## Durability & Connectivity

Rextorm's durability and connectivity is perfect for defense application.

- ◆ Ruggedness & wide temperature design for harsh missions.
- ◆ Built-in WiFi / WWAN enables command center communications.
- ◆ Rich I/O enables better Robotics control.



## Material & Quality Management

Rextorm made it possible to handle complex data entry, inventory tracking and monitor process and quality while in and out of the steam and cooling rooms.

- ◆ Built-in 2D barcode reader with dedicate trigger button.
- ◆ Stable wireless communication for data transfer and collection.
- ◆ Rich I/O port for multi-purpose job tasks.



Kiitos Danke Tak Merci 고만합니다  
Благодарности Благодарю вас!  
Gracias Díky 謝謝 ありがとう  
Grazie **THANK YOU** Cám ơn  
Ευχαριστ Obrigado Asante dhanyavaad shokran  
Gracias Ngiyabonga terima Kasih  
dank u Salamat Do  
kob-khun