

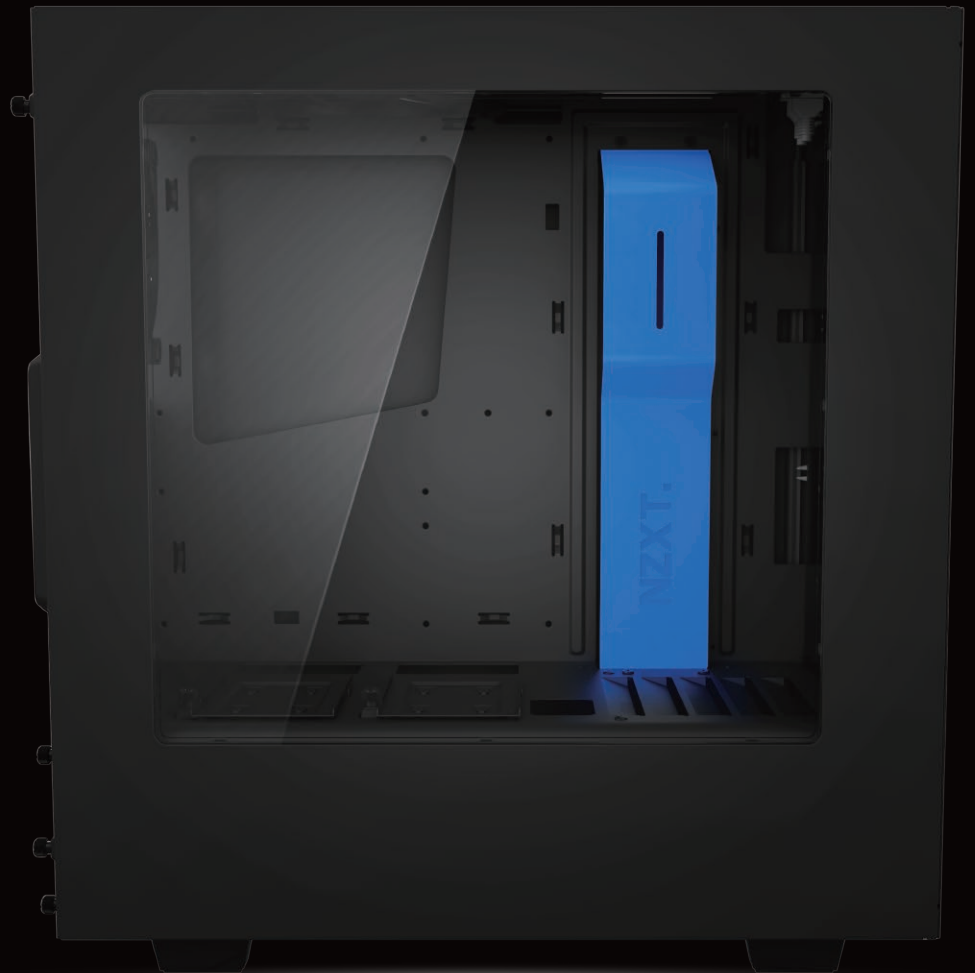
NZXT.™



S340 COLOR EDITION

DESIGN

UNIQUE



Interior Layout

A sea of space fills the interior, with the grommet-less steel cable management bar splitting the front intake from the rest of the case and keeping cables hidden and tame.

DESIGN



ALL STEEL



Construction

With 90% of the case being steel, we're able to deliver superior durability for a case you can keep build to build.

FEATURES



EVERYTHING YOU NEED.

And Then Some.

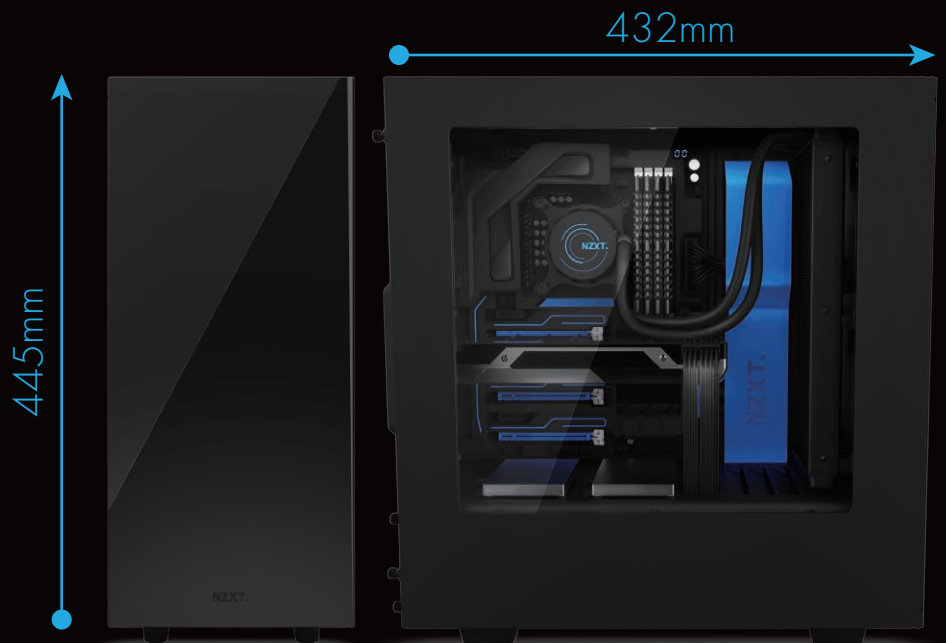
Comes complete with the basics, USB 3.0 and HD Audio, but gives you even more with high quality materials, a smart interior layout, and tons of cable management potential.

FEATURES



Engineering

We care about the little things. Steel plated audio jacks, captive thumb screws, and over twenty cable management points are just a few of the small touches that we've added.



COMPACT Size

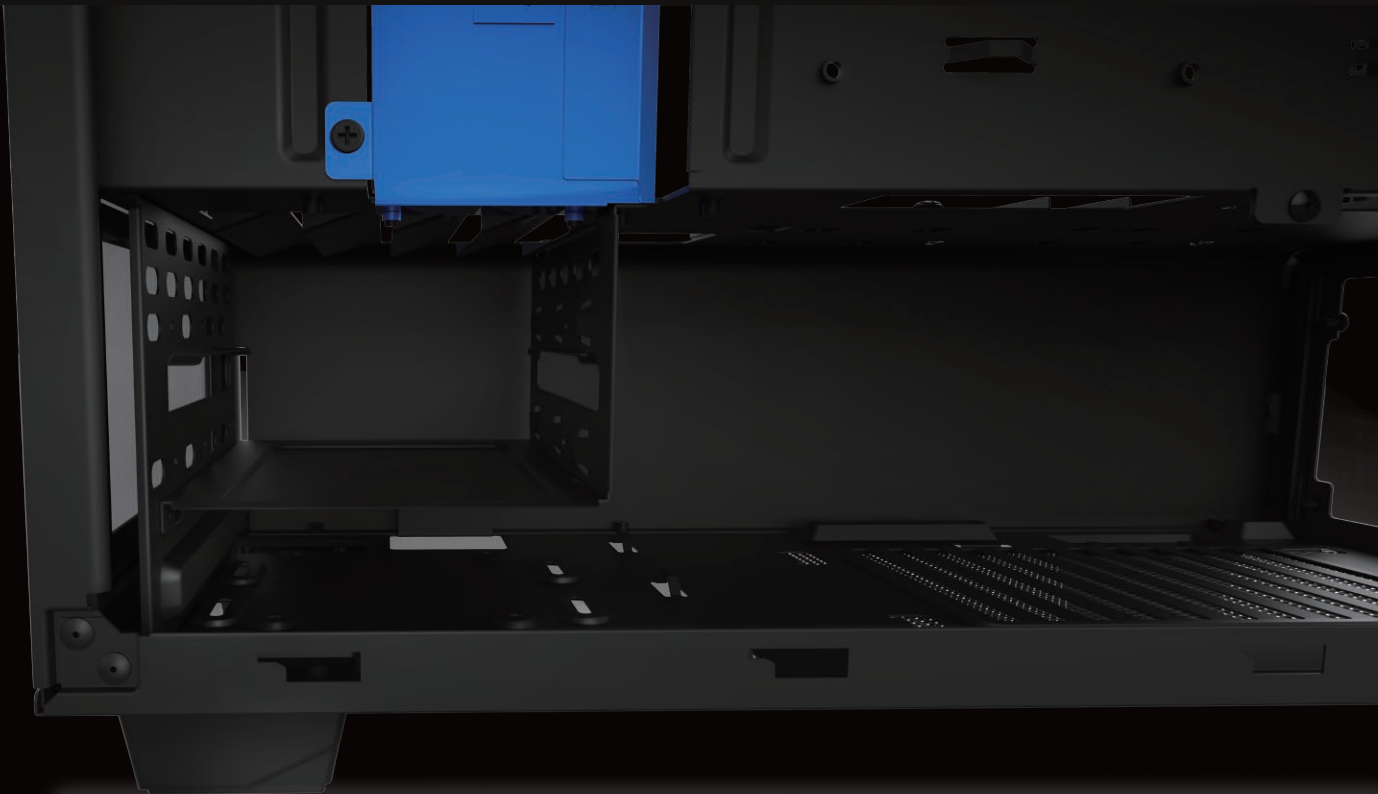
Measuring in at 445mm high and 432mm long, the S340 bucks the trend of tall, thick cases, enabling you to keep your PC's footprint to a minimum.

FEATURES

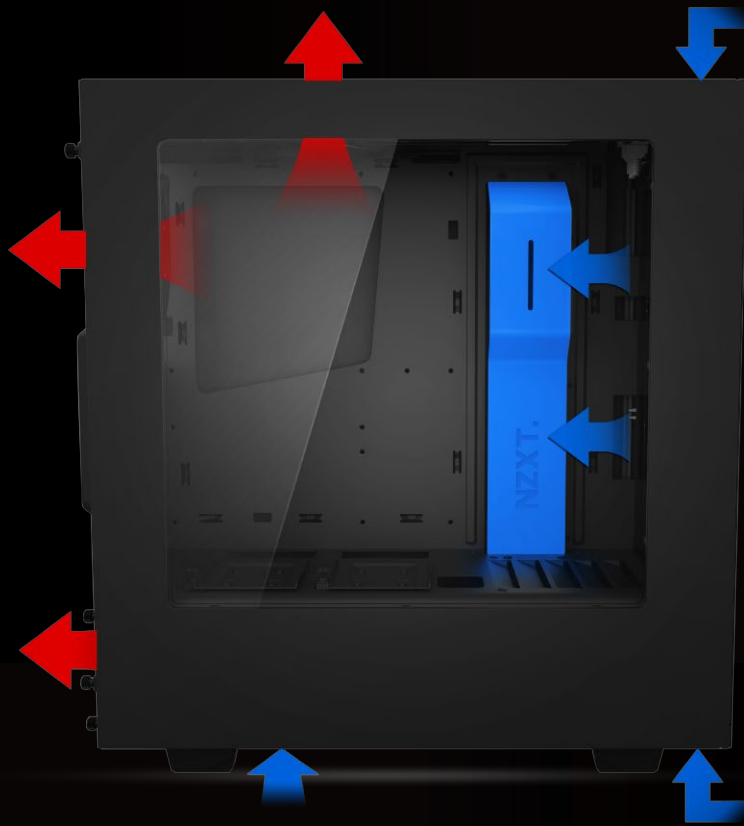


EASE OF USE

Tons of open space and functional design makes this one of the easiest cases to build in that we've made to date.



AIRFLOW



SPECIFICATION

Dimensions(WxHxD)	200 x 445 x 432 mm
Material(s)	Steel & Plastic
Total Weight	7.05 Kg
Motherboard Support	ITX, MicroATX, ATX
External Features	1xHD Audio/Mic,2xUSB3.0

BAYS & EXPANSION

Internal 2.5"	2+1
Internal 3.5"	2+1
PCI Expansion Slots	7

COOLING

Front	2x120mm or 2x 140mm
Top	1x 120mm or 1x 140mm (120mm included)
Rear	1x 120mm (one included)

CLEARANCE

CPU Cooler	161mm
Front Radiator	58mm
Rear Radiator	75mm

WARRANTY TERM

2 years

PACKAGE INFORMATION

Unit Dimensions(WxHxD)	258 x 605 x 570mm
Net Weight	7.05 kg
Volume	0.132 m ³
Gross Weight	8.17 kg

W/O Pallet

20 GP	395 pcs
40 GP	805 pcs
40 HQ	897 pcs

Pallet

20 GP	320 pcs
40 GP	704 pcs
40 HQ	792 pcs

EAN Code

Black/Blue	5060301692637
Black/Red	5060301692644

UPC Code

Black/Blue	815671012364
Black/Red	815671012371

Model Numbers

Black/Blue	CA-S340MB-GB
Black/Red	CA-S340MB-GR

DESCRIPTION



25-Word Product Description

The S340 mid tower case combines an uncompromising approach to chassis design and pure, functional style to set the new standard for the PC case.

50-Word Product Description

The S340 mid tower case combines an uncompromising approach to chassis design and pure, functional style. Complete with 90% steel construction, a compact form factor, and the most unique, build-friendly layout we've ever made, this durable mid-tower has everything you need and then some.

100-Word Product Description

The S340 mid tower case combines an uncompromising approach to chassis design and pure, functional style to bring you the new standard in case design. A compact form factor and a unique, build-friendly layout allows this durable mid-tower to be extremely easy to use regardless of experience level. 360 degrees of steel casing and heavy duty side panels makes this one of the most durable cases NZXT has ever made.